

# 무대 장치 목록표

번호	품명	규격 (MM)	수량	구동방식	속도 (M/MIN)	용량 (KW)	자중 (DEAD LOAD)	인양하중 (LIVE LOAD)	총하중 (TOTAL LOAD)	비고
01	PLACARD BATTEN	14,000L	1SET	MOTORIZED	12 m/min	2.2kW x 4P	100 KG	400 KG	500 KG	구동부 재사용
02	APRON LIGHT BATTEN	14,000L	1SET	MOTORIZED	12 m/min	4.0kW x 4P	250 KG	550 KG	800 KG	
03	NO.1~9 SET BATTEN	15,000L(Extension 2m)	9SET	MOTORIZED	0.1~60 m/min	11kW x 4P	200 KG	600 KG	800 KG	
04	NO.1 DRAW CURTAIN (UP-DOWN)	17,000L x 9,500H	1SET	MOTORIZED	0.1~60 m/min	11kW x 4P	800 KG	---	800 KG	
	NO.1 DRAW CURTAIN (OPEN-CLOSE)		1SET	MOTORIZED	24 m/min	0.37kW x 4P				
05	NO.1~3 SUSPENSION LIGHT BATTEN	15,000L	3SET	MOTORIZED	12 m/min	4.0kW x 4P	250 KG	550 KG	800 KG	
06	NO.2~3 DRAW CURTAIN (UP-DOWN)	20,000L x 9,500H	2SET	MOTORIZED	0.1~60 m/min	11kW x 4P	800 KG	---	800 KG	
	NO.2~3 DRAW CURTAIN (OPEN-CLOSE)		2SET	MOTORIZED	24 m/min	0.37kW x 4P				
07	NO.1 UPPER SOUND REFLECTION BOARD BATTEN	15,000L	1SET	MOTORIZED	6 m/min	4.0kW x 4P	200 KG	1,000 KG	1,200 KG	
	NO.1 UPPER SOUND REFLECTION BOARD	15,400L x 2,985H								
08	FRONT SCREEN	15,000L x 9,500H	1SET	MOTORIZED	12 m/min	2.2kW x 4P	600 KG	---	600 KG	
09	NO.1,2 SIDE SOUND REFLECTION BOARD BATTEN	6,000L	2SET	MOTORIZED	6 m/min	4.0kW x 4P	200 KG	1,000 KG	1,200 KG	
	NO.1,2 SIDE SOUND REFLECTION BOARD	6,000L x 8,500H								
10	NO.2 UPPER SOUND REFLECTION BOARD BATTEN	15,000L	1SET	MOTORIZED	6 m/min	4.0kW x 4P	200 KG	1,000 KG	1,200 KG	
	NO.2 UPPER SOUND REFLECTION BOARD	13,760L x 2,985H								
11	FRONT SOUND REFLECTION BOARD BATTEN	15,000L	1SET	MOTORIZED	6 m/min	5.5kW x 4P	200 KG	2,000 KG	2,200 KG	
	FRONT SOUND REFLECTION BOARD	12,950L x 7,800H								
12	UPPER HORIZONT LIGHT BATTEN	15,000L	1SET	MOTORIZED	12 m/min	4.0kW x 4P	250 KG	550 KG	800 KG	
13	NO.1 CYCLORAMA CURTAIN(WHITE)	16,000L x 9,500H	1SET	MOTORIZED	18 m/min	4.0kW x 4P	800 KG	---	800 KG	
14	NO.2 CYCLORAMA CURTAIN(BLACK)	16,000L x 9,500H	1SET	MOTORIZED	18 m/min	4.0kW x 4P	800 KG	---	800 KG	
15	GRID IRON		1식							
16	HEAD CURTAIN	17,000L x 3,000H	3SET							SET BATTEN에 발부착 사용(1SET는 모양막으로 커튼제작)
17	STAIR LIFT	1,000L x 1,214W	1SET	MOTORIZED	0.1~3 m/min	0.37kW x 4P	200 KG	200 KG	400 KG	개별제어
18	MCC CONTROL PANEL	M29	1식							
19	CONTROL SYSTEM	(MAIN&SUB) M29	1식							
20	PIPING & WIRING	M29	1식							
TOTAL						187.76 KW				
						187.76 KW x 60% = 112.6 KW				

설계명  
PROJECT TITLE  
동두천 시민회관 리모델링 공사

특기사항  
NOTES

변경  
REVISION


제도  
DRAWN BY  
검토  
CHECKED BY  
설계  
DESIGNED BY  
승인  
APPROVED BY

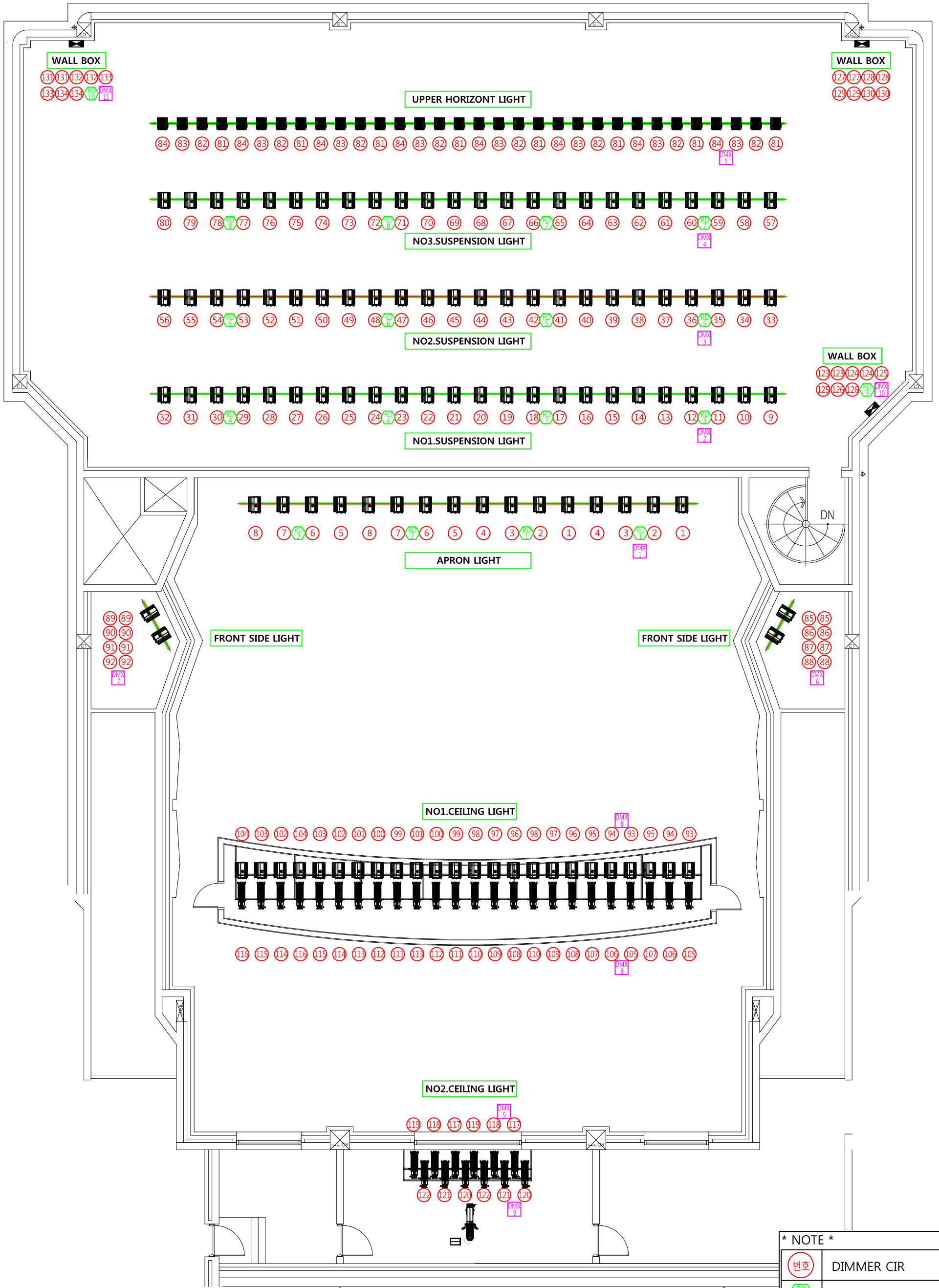
도면명  
NAME OF DRAWING  
공연장  
목록표  
축척  
SCALE 1/80 날짜  
DATE 2019. 12.

도면번호  
DRAWING NO.  
A - 101  
일련번호  
SHEET NO.





# 동두천 시민회관 무대조명 배치도



\* NOTE \*

번호	DIMMER CIR
RD 번호	REMOTE DIRECT CIR
DMX 번호	DMX CIR